



# F8500 Series

## FLOOR SPRINGS



The CISA F8500 floor springs are designed to handle different door types weighing up to 300kg, making them suitable for harsh weather conditions and high-traffic environments such as hospitals, shopping centers, and buildings with fire-resistant glass doors. These floor springs are constructed with robust materials and meet the ANSI Grade 1 standards, ensuring their strength and dependability.

## Features

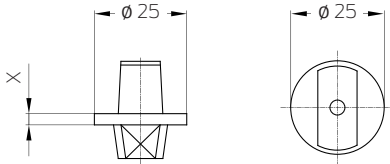
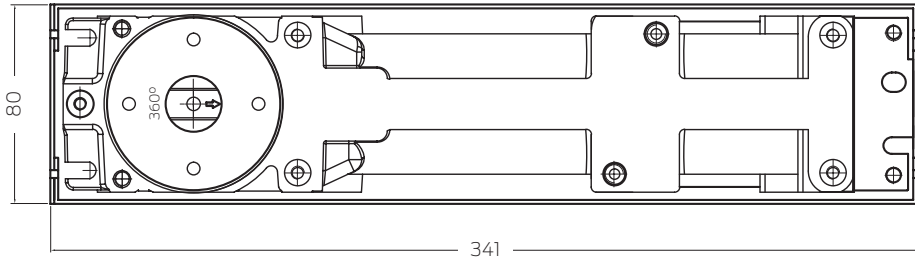
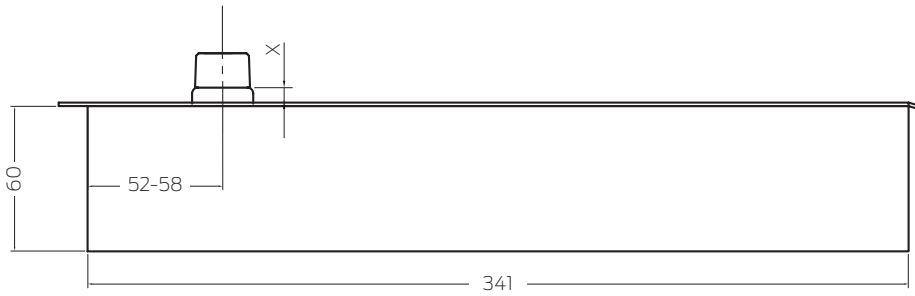
- **Exceptional quality** - Made of high-grade cast-iron body
- **Adjustable power size EN1-6** - Provides flexibility for installations requiring both barrier-free and non-barrier-free openings.
- **Durable** - Heavy duty design handles up to 300 kg doors
- **Wide selection of interchangeable spindles** - Fits any floor covering or threshold application.
- **Adjustable closing and latching speed**
- **Wide door opening angle** - Up to 180°
- **Optional hold** - Open at 90°
- **High efficiency mechanism** - Offers maximum user convenience
- **Highest safety standards** - Complies to ANSI A156.4 and EN1154:1996 (Pending)

### Warranties

Mechanical	International Warranty*
Electronic	International Warranty*

\*Please refer to the International Warranty agreement.

# Dimensions



## Expandable Spindle

X	3 (Default)	5	10	15	20	25	30	35	40	45	50

All measurements are in mm.

# Technical specifications

Model	F8500
Closing Force acc to EN1154	EN 1 - 6
Adjustable Closing Force	Yes
Max Door Width (mm)	1400
Max Door Weight (kg)	300
Adjustable Closing Speed	170° - 15°
Adjustable Latching Speed	15° - 0°
Hold Open	Optional 90°
Max Opening Angle (Hinge Side)	180°
Back Check	-
Delay Action	Option
Handling	Non-Handed
Dimension (mm)	341 (L) / 80 (W) / 60 (H)
Extended Spindle (mm)	3 / 5 / 10 / 15 / 20 / 25 / 30 / 35 / 40 / 45 / 50
Compliance	ANSI A156.4 and EN1154:1996 (Pending)